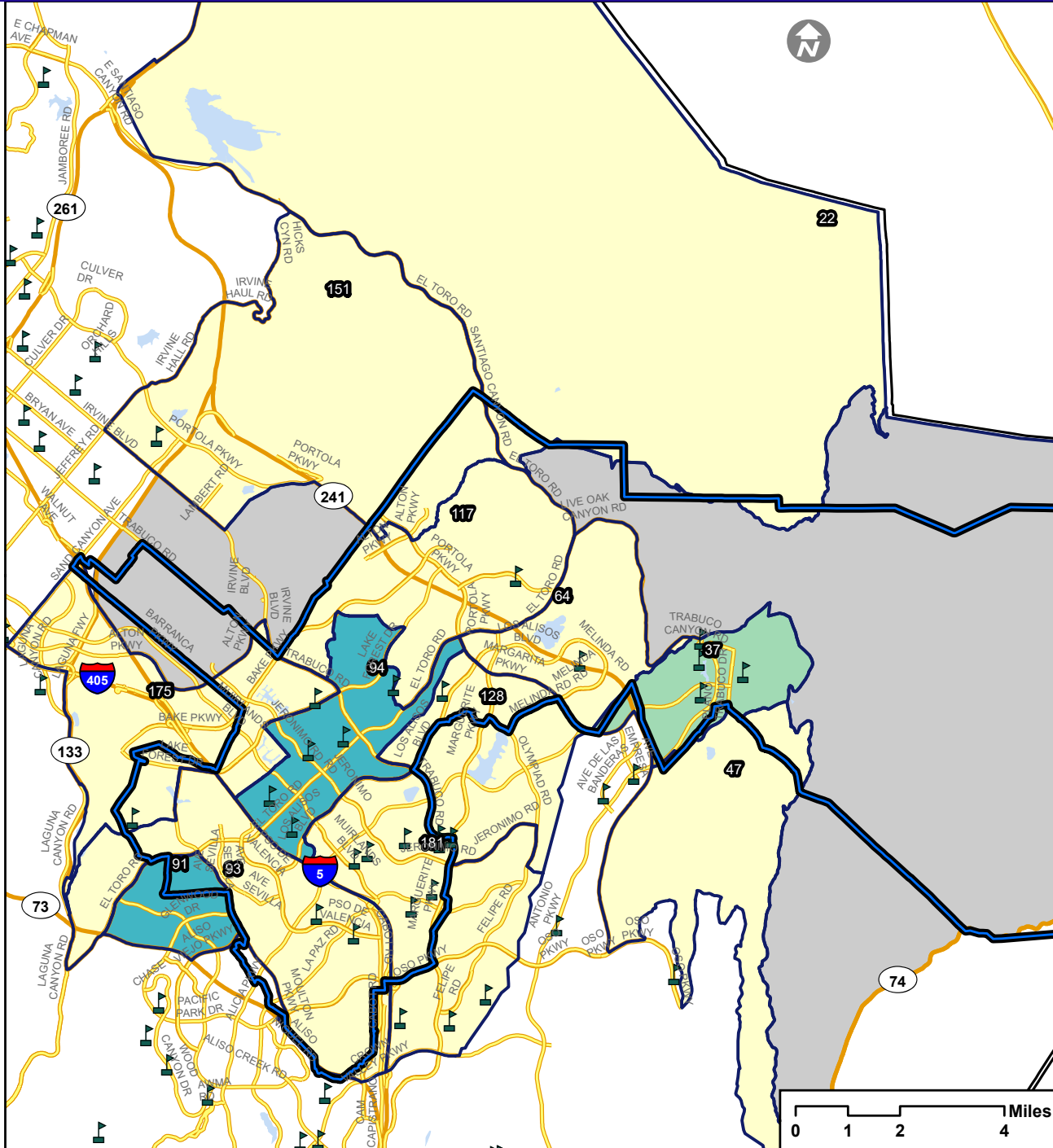


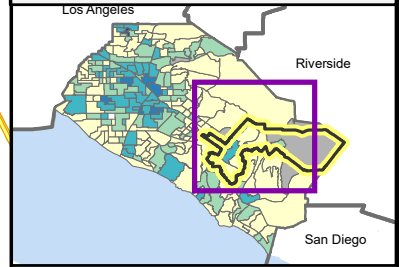
EDI 2016: Children Vulnerable on One or More Developmental Areas in Saddleback Valley Unified School District

Neighborhoods: Percentage Vulnerable on One or More Areas

ID	Neighborhood	%
22	Central East 16	7%
37	Coto/Trabuco/Dove	26%
47	Dove Canyon/Coto	7%
64	Foothill Ranch/Portola Hills South	19%
91	Laguna Audubon	27%
93	Laguna Woods	20%
94	Lake Forest	28%
117	Modjeska	14%
128	North Mission Viejo	16%
151	Portola Springs	11%
175	Shady Canyon	20%
181	South Mission Viejo	16%
Community-wide		22%



Inset Map of Orange County



Legend

- School
- School District Boundary
- Neighborhood Boundary
- Few data (<10 EDI Records)

Proportion of Children Developmentally Vulnerable

- 0% - 19%
- 20% - 25%
- 26% - 32%
- 33% - 38%
- 39% or more

- EDI Developmental Areas include:
- Physical Health & Well-Being
 - Social Competence
 - Emotional Maturity
 - Language & Cognitive Development
 - Communication Skills & General Knowledge

